

# **NANO-CLEAR INDUSTRIAL COATING**

**the  
EVOLUTION  
in  
asset maintenance**



**Crystal clear**  
**Aliphatic**  
**Polyurethane/Polyurea**  
**Elastomeric hybrid**  
**1K top coat**



**Formulated to  
penetrate & fortify  
existing  
new and oxidized paint  
(not replace it)  
creating a  
**long-term** protective system**

# Nano-Clear<sup>®</sup>

**Conventional Coatings –  
Linear Chain Molecules =**

**Low crosslink density = ...**

- Poor long-term weathering
- Poor chemical resistance
- Poor scratch resistance
- Poor cleaning properties



**Nano-Clear Coating -  
High crosslink density = ...**

- High UV resistance
- High chemical resistance
- High abrasion resistance
- High chip resistance
- High scratch resistance

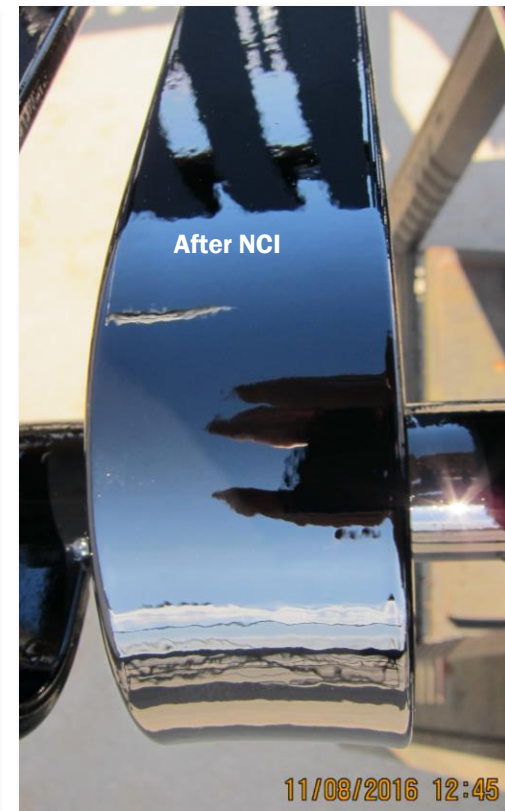
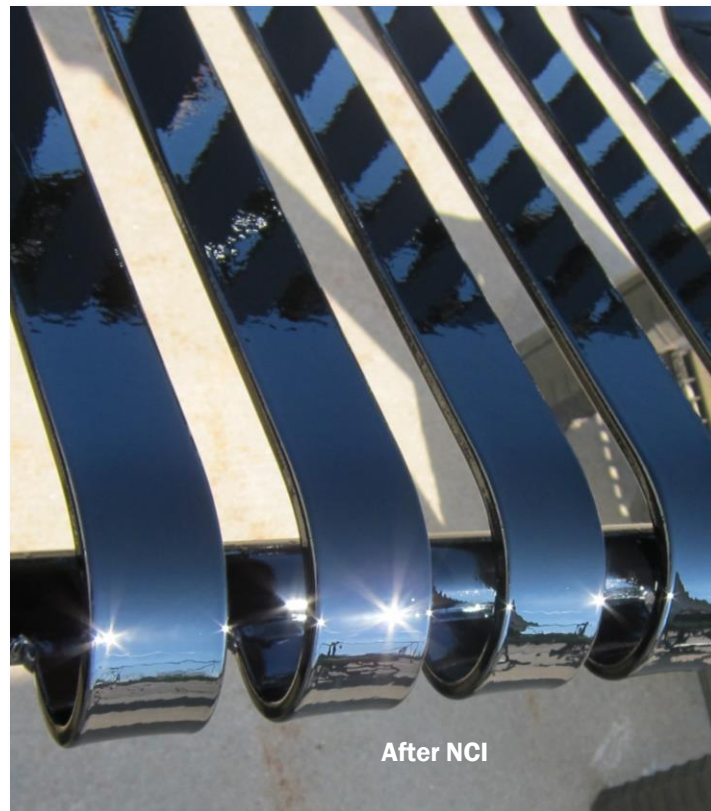


# Benches





# Benches



# Concrete Block



NCI is formulated to penetrate concrete to form an impervious barrier and to create a “tough” coating on the surface – reducing required maintenance resources (time and materials).







# Doors





# Doors





# Doors



# Enclosures



# Enclosures

Before NCI



After NCI





# Equipment



# Equipment

Before NCI



After NCI





# Light Poles



# Light Poles







# Light Poles





# Light Poles



# Storage Tank





# Water Slide







# Water Slide





# **Savings - Money**

## **Reduce one maintenance cycle**

# **PAYS FOR NCI**



# Do It YOURSELF

## SPRAY CAN AVAILABLE IN 2017





**For more information please contact:**

**Kirk E. Jeffries**  
**Industrial Solutions USA**  
**5115 S. Rolling Green Ave., Ste. 211**  
**Sioux Falls, SD 57108**  
**605-274-9295**  
**[www.isusananoclear.com](http://www.isusananoclear.com)**